

# BACKGROUND INFORMATION DOCUMENT

## BASIC ENVIRONMENTAL ASSESSMENT

### UPGRADING OF THE TRANSNET CITY DEEP CONTAINER TERMINAL, JOHANNESBURG

SEPTEMBER 2008

#### INTRODUCTION

Transnet Freight Rail would like to upgrade their existing City Deep container terminal to improve on the efficiency of the terminal. The upgrade process is proposed to improve the efficiency of the terminal in order to handle a larger number of containers arriving by rail from coastal ports and departing from the terminal to various destinations. The upgrading process will include a number of activities that will require changes to current infrastructure as well as the refurbishment of existing infrastructure. Among the activities that will be conducted will be the upgrading of the high mast lighting system as well as the construction of a new diesel refuelling area.

The construction of the high mast lighting system and the diesel refuelling station will require environmental authorisation under Regulation 385 of the National Environmental Management Act No 107 of 1998 prior to their commencement. Synergistics Environmental Services (Pty) Ltd has been appointed as independent environmental consultants who will be responsible for conducting the basic environmental assessment for the project. A notice of intent (Ref No. 12/12/20/1259) has been submitted to the National Department of Environmental Affairs and Tourism (DEAT) to give notification of the intention to apply for environmental authorisation for the project.

#### PURPOSE OF THIS DOCUMENT IS TO:

- Inform you of the proposed project
- Provide you with an opportunity to comment, raise concerns and ask questions;
- Provide you with an opportunity to register as an Interested and Affected Party;
- Introduce the Basic Environmental Assessment process that will be undertaken for the project and;
- Explain how you can get involved in the environmental assessment process



# PROJECT DESCRIPTION

## PROJECT OVERVIEW

The City Deep Container Terminal Upgrade Project will be carried out in two phases. It is planned that the throughput of the terminal will increase from 130 000 twenty foot equivalent containers (TEU's) to 500 000 TEU's per year in phase 1 and increase to a maximum of 1 million TEU's per year in phase two. Refurbishment at the terminal will be conducted both outside and inside the terminal. The following activities that are listed in Regulation 386 of the National Environmental Management Act No 107 of 1998 (NEMA) will be undertaken as part of the upgrading project:

### High Mast Lighting System

The container terminal currently has seventeen lighting masts. The existing high mast lighting system provides insufficient light for safe operations at the container stacking area. It is planned that nine new lighting masts will be installed. These masts will be 40m high and will be made from steel with a concrete foundation.

### Diesel Storage System

The current diesel storage area which stores 46 000 litres has insufficient capacity to cater for the expansion of the terminal. A new refuelling area will be developed north of the container terminal within Transnet Property. The new refuelling area will have a capacity to store 100 000 litres of diesel. All diesel tanks will be kept in a concrete bunded area

The following activities will also form part of City Deep Container Terminal Upgrade Project:

- Formalising the staging area directly south of the main entrance gate on Houer Road. The area will be tarred, fenced and a customer service area will be built.
- Modification of the central island in Houer Road to allow trucks to cross from the staging area to the terminal.
- Refurbishment of entrance and exit gates including new security checking system and weigh bridges.
- Replacement of the terminal pavement and stormwater drains.
- The construction of an oil separator
- Refurbishment and replacement of old buildings.
- Increase in container handling equipment which will entail the increase in the number of reach stackers and rubber tyred gantries
- Installation of seven backup power generators producing between 1 MVA and 3 MVA

## PROJECT TIMEFRAMES

The proposed upgrading is planned to occur in two phases in which throughput for the container will be increased at each stage. It is expected that the planned activities for phase 1 will occur over a period of three years and the time period for phase two has not been determined. It is anticipated that phase 1 activities will commence in January 2009

# PROJECT DESCRIPTION

## PROJECT LOCATION

The Transnet City Deep Container Terminal is located in City Deep which is approximately 4km south east of the Johannesburg Central Business District. The terminal is situated at the corner of Houer and Bonsmara Road. The closest residential area is Elandspark which lies approximately 2 kilometres south of the terminal (Refer to Figure 1 for Locality Map).

## AFFECTED ENVIRONMENT

The environment in which the container terminal is located has been impacted on by mining as well as industrial development. The land use in the area is largely industrial. Approximately 300m east and south east of the terminal is the Natalspruit and the Rosherville Lake which have been polluted by previous mining activities and domestic usage. North of the container terminal is an open veld. The development will not require expansion of the current footprint area.

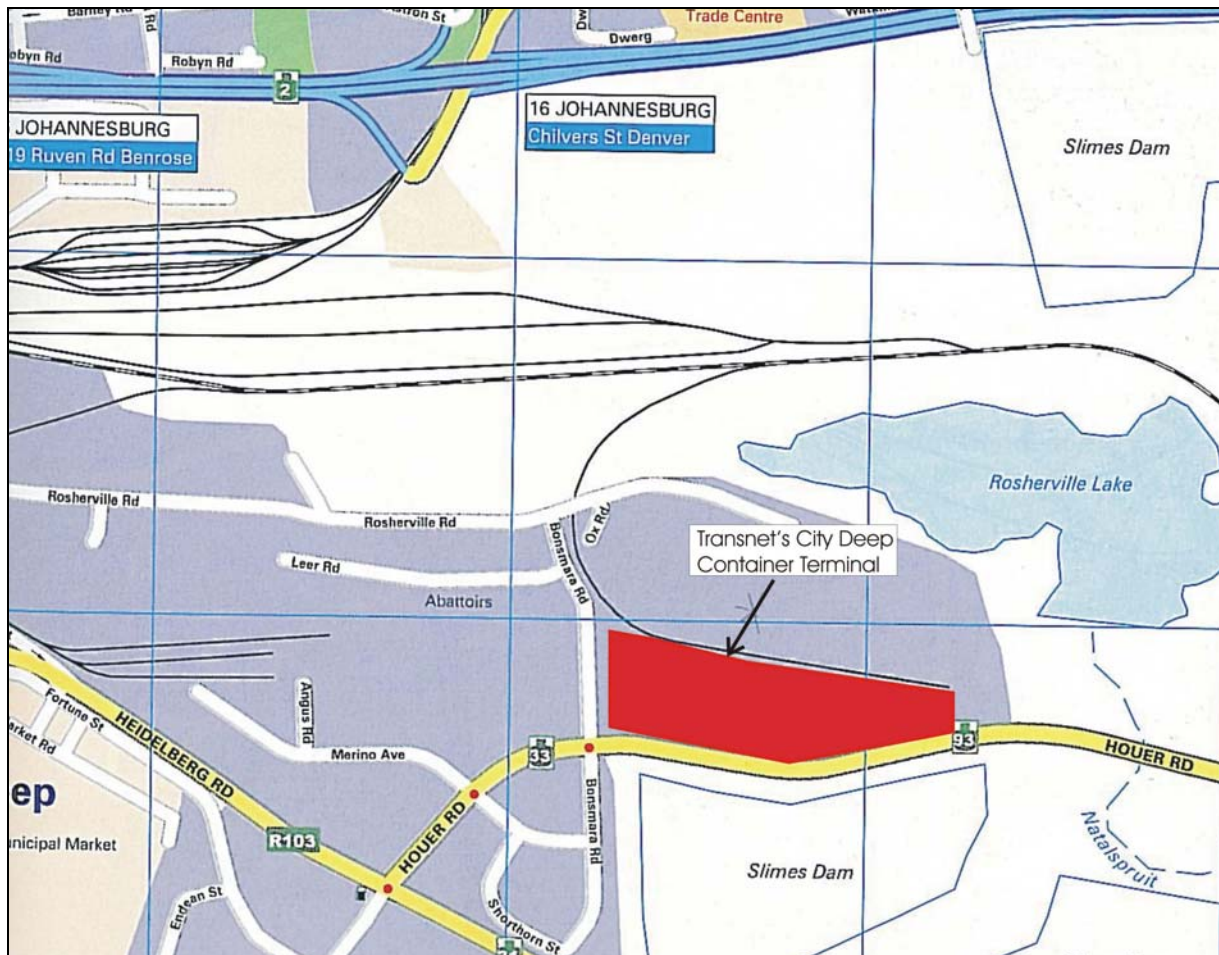


Figure 1: Location of the Transnet City Deep Container Terminal, (City Deep, Johannesburg).

# ENVIRONMENTAL ASSESSMENT PROCESS

## BASIC ASSESSMENT PROCESS

A basic assessment for the project is required as the development of a diesel storage area with a capacity to store 100 000 litres as well as high mast lighting system with a mast that is 40m high is captured under Regulation 386 of the National Environmental Management Act No 107 of 1998. The basic assessment process will be undertaken to assess and mitigate the impacts that may occur as a result of the abovementioned activities. A basic assessment report in a standard format will be compiled and the public will be given an opportunity to comment on the report. The final report with all public comments will be submitted to the DEAT for review. Figure 2 below indicates the activities that will be undertaken for the basic assessment process.

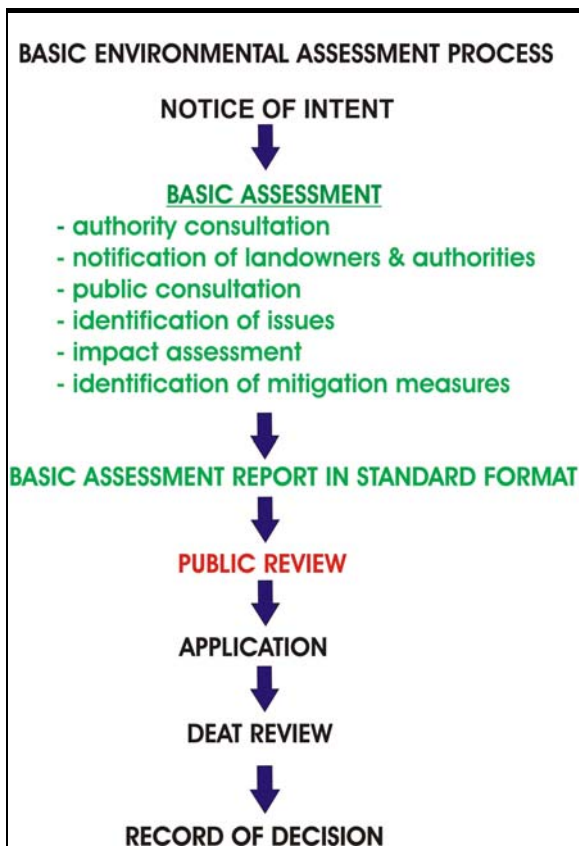


Figure 2: Basic Environmental Assessment Process

## HOW CAN YOU GET INVOLVED IN THE PROCESS?

You can be involved during public participation process of the basic assessment process by:

- Registering as an Interested and Affected Party,
- Submitting your issues, concerns and questions in writing before 5 October 2008,
- Providing us with details of other persons that may be interested, and
- Reviewing of Basic Assessment Report which will be made available for the public.

## QUERIES:

If you have any questions or queries please feel free to contact:

Synergistics Environmental Services

**Zama Khumalo**

Tel: (011) 807 8225

Fax: (011) 807 8226

Email: [zama@synergistics.co.za](mailto:zama@synergistics.co.za)

Post: P O Box 1822, Rivonia, 2128

# RESPONSE SHEET

## BASIC ENVIRONMENTAL ASSESSMENT UPGRADING OF THE CITY DEEP CONTAINER TERMINAL

**Return completed sheet to:** Zama Khumalo  
Synergistics Environmental Services  
Fax: 011 807 8226  
E-mail: zama@synergistics.co.za  
PO Box 1822, Rivonia, 2128

Name and Surname:	
Organisation:	
Address:	
Telephone:	
Cell phone:	
Fax:	
E-mail:	
Date:	
Signature:	

**What is your preferred language of correspondence (please tick)?**

English	<input type="checkbox"/>	Afrikaans	<input type="checkbox"/>
---------	--------------------------	-----------	--------------------------

**If you know of someone who should be informed of the project, please provide us with their contact details:**

Name and Surname:		
Farm name/organisation:		
Telephone:		
Cell phone:		
Fax:		
E-mail:		

### *ISSUES, CONCERNS AND QUESTIONS*

(use additional pages if required)

**ALL COMMENTS MUST REACH US BY 5 OCTOBER 2008**
